



BIT-LOK™ INTER-LOCKING DRIVE SYSTEM

DRIVER SIZES

TBL-2

SCREW SIZES

#10

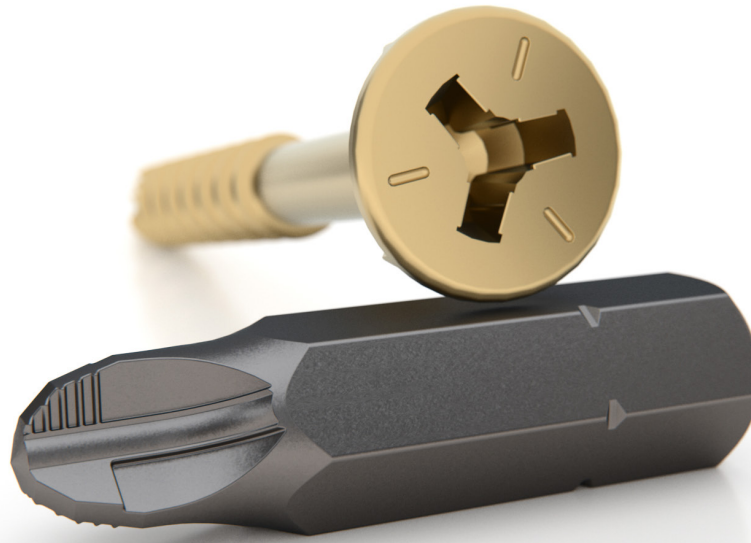
APPLICATIONS

CONSTRUCTION

INDUSTRIAL

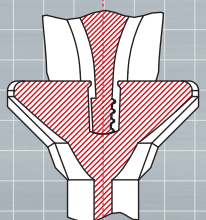
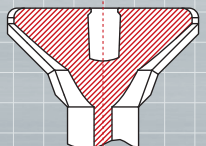
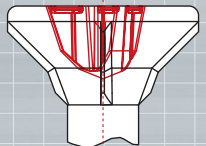
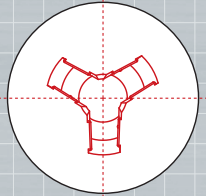
ASSEMBLY

AUTOMOTIVE



A drive system that truly locks the bit to the screw

BIT-LOK™ patent pending design provides inter-locking features on either the drive or removal wall or both. When driving the lock engages and there is no longer force required to keep the bit in the recess, in fact the system pulls the driver toward the work.



FEATURES

- ✔ Patent pending inter-locking features for driving direction
- ✔ Locking features can also be used in the removal direction
- ✔ Technology could be applied to other drive styles

BENEFITS

- ✔ Once started, no force is required to keep the bit in the recess
- ✔ Useful in overhead or ladder situations where it is difficult to apply pressure
- ✔ Useful in hard-to-reach areas like cabinets and enclosures
- ✔ Reduce chance of material damage from cam-out
- ✔ Reduces effort and chance for injury when driving many screws
- ✔ Reduce chance of cam-out during disassembly and service
- ✔ Eliminate the need to drill out
- ✔ Allows for compatibility with existing drivers
- ✔ Combine with benefits of other Phillips Screw Company drive systems such as **MORTORQ®** or **MORTOR® SUPER**



The Phillips Screw Company®

110 Haverhill Road, Building A, Suite. 401, Amesbury, MA 01913, U.S.A.

T (781) 224-9750

E bit-lok@phillips-screw.com

W phillips-screw.com

BIT-LOK™ is a trademark of The Phillips Screw Company. ©2023 The Phillips Screw Company.

