



PHILLIPS II® DRIVE SYSTEM

DRIVER SIZES

0 THRU 5

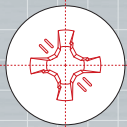
SCREW SIZES

1.6MM (#0) THRU M12 (9/16 IN)

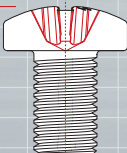
APPLICATIONS

MOBILE MEDIA
 PERSONAL COMPUTERS
 LAPTOPS
 NETBOOKS
 SERVERS
 TELECOMMUNICATIONS
 MEDICAL ELECTRONICS
 CONSUMER ELECTRONICS
 AUDIO ELECTRONICS
 HAND-HELD DEVICES
 CELL PHONES
 DIGITAL CAMERAS
 GPS DEVICES

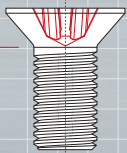
Phillips supports multiple head-style options in various screw sizes and thread types



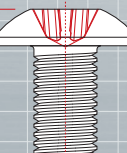
PAN HEAD



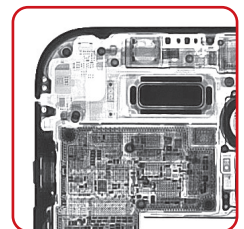
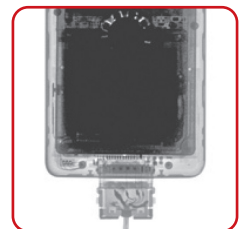
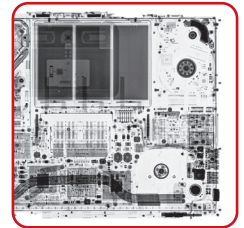
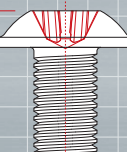
FLAT HEAD



TRUSS HEAD



FLAT-TOP, ROUNDWASHER HEAD



Designed and engineered to replace generic Phillips screws

The **PHILLIPS II®** Drive System has been designed to meet the ever-challenging demand of faster manufacturing assembly processes that can cause driver cam-out, resulting in component surface damage and scrapped components. It facilitates off-angle fastener driving efficiency in difficult assembly positions and reduces end-load pressure, resulting in less operator fatigue.

FEATURES

- + Enhanced cruciform drive with anti-cam-out recess **ACR®** technology
- + Reduced end-load pressure
- + Distinctive head marking that easily identifies a **PHILLIPS II®** Drive System
- + Phillips Screw Company quality inspections

BENEFITS

- + Virtually eliminates cam-out
- + Improves off-angle drive efficiency
- + Reduces burred screwheads and marred components
- + Aids in disassembly for more effective maintenance and service
- + Speeds assembly while reducing defects and rework
- + Field service compatible with generic Phillips driver bits
- + Lowers operator fatigue and increases productivity
- + Assures global system quality and compatibility

The Phillips Screw Company® 301 Edgewater Drive, Suite 320, Wakefield, MA, 01880 U.S.A.

T (781) 224-9750 **E** electronics@phillips-screw.com **W** phillips-screw.com

PHILLIPS II® and ACR® are registered trademarks of The Phillips Screw Company. ©2021 The Phillips Screw Company.

